

// IN HARMONIE

GUIDELINES | RIGLYNE



The image is a vertical collage of three photographs. The top photo shows a wooden cup filled with a dark liquid, with a hand holding a loaf of bread in the foreground. The middle photo shows two hands clasped together in a gesture of welcome or prayer. The bottom photo shows a campfire with logs and a person sitting nearby. The text is overlaid on the collage.

// W E L C O M E

Welcome to **in Harmonie!** It is a privilege to welcome you here. To ensure you have the most comfortable visit we'd like to give through a few practical guidelines for your attention.

Welkom by **in Harmonie!** Dit is vir ons 'n voorreg om u hier te ontvang. Om u besoek so gerieflik moontlik te maak wil ons net die volgende praktiese riglyne deurgee.

// Accommodation

Rooms need to be vacated and keys handed in at reception by 08:00 on day of departure.

A list with emergency numbers are available next to the telephone in the lounge area of each cottage.

The air conditioner switch is above the basin in the kitchenette.

The switch of the geyser is on top of the counter – please do not adjust settings.

Wine may be served during dinner, but no alcohol is allowed in the cottages/rooms.

in Harmonie provides your bedding, a bath and hand towel, a hair dryer and safe for safekeeping if needed.

in Harmonie does not have iron facilities and we suggest you pack a steamer if that will be necessary.

// Akkommodasie

Kamers moet ontruim en sleutels by ontvangs ingehandig word teen 08:00 op die dag van vertrek.

'n Lys met noodtelefoonnommers is beskikbaar in die sitkamergedeelte van die huisies.

Die lugversorger se skakelaar is bo die wasbak in die kombuis area.

Die geyser se skakelaar is bo die toonbank – moet dit asseblief nie verstel nie.

Wyn mag tydens aandetes bedien word, maar geen alkohol word in die huisies/kamers toegelaat nie.

in Harmonie voorsien bedlinne, 'n badhandoek, gesighandoek, 'n haardroër asook kluis vir veilige bewaring indien nodig.

in Harmonie beskik nie oor stryk fasiliteite nie. Bring asb 'n stoomstrykyster saam indien benodig.

// What to bring

There is no "dress code" so pack what is comfortable for you.

The conference room temperatures can vary and the Western Cape weather is unpredictable so do dress accordingly. All aircons in the venues are set to a standard of 22°C Dry.

You are welcome to bring a notebook and pen.

// Wat om saam te bring

Daar is geen voorskrifte vir kleredrag nie. Ons voorstel is om klere saam te bring waarin jy gemaklik is.

Die temperature in die lokale kan wissel en die Weskaap se weer is onvoorspelbaar. Maak dus voorsiening hiervoor. Alle lugreëling in lokale word as standaard op 22°C "Dry" gestel.

Jy is welkom om 'n notaboek en pen saam te bring.

// Use of cellphones

in Harmonie creates a space where you can reflect. Please stay in the moment and switch off your cell phones during sessions.

// Gebruik van selfone

in Harmonie skep 'n ruimte waarbinne jy kan reflekteer en net in die oomblik kan vertoef. Ons sal dit waardeer indien selfone tydens sessies afgeskakel word.

// WiFi

On your WiFi options, tap on inHarmonie_WiFi to sign into and submit when taken to the landing page for access to the internet. No password is required.

The network is managed and monitored by our IT department.

The Apple AppStore and Google PlayStore cannot be used the network as updates and downloads are blocked on the network.

// WiFi

Onder die WiFi opsies op jou toestel, kies inHarmonie_WiFi om in te teken. Geen wagwoord word benodig nie.

Die netwerk word bestuur en gemonitor deur ons IT afdeling.

Die Apple AppStore en Google PlayStore kan nie gebruik word op die network nie want opdaterings en aflaai word geblok op die network.

// Photos

We would like to give each visitor the opportunity to experience **in Harmonie** in his/her unique way. We therefore kindly request that no photos taken in prayer gardens are posted on social media.

// Foto's

Ons wil graag vir al ons gaste die geleentheid gee om **in Harmonie** op sy/haar unieke manier te ervaar en daarom rig ons 'n vriendelike versoek dat geen foto's van die gebedstuine op sosiale media geplaas word nie.

// Smokers

Smoking is only allowed in the Boma area.

Please make use of sand bowls at dust bins for your cigarette buds – please refrain from leaving buds in other areas.

Should there be a gathering at the Boma, please accommodate non-smokers.

// Rokers

Rokers word slegs by die Boma geakkommodeer.

Maak asseblief gebruik van sandbakke by vullisdromme om stompies te dood – moet asseblief nie enige stompies elders gooi nie.

Neem asseblief nie-rokers in ag wanneer daar 'n samekoms by die Boma plaasvind.

// Lost and Found items

Guests should inform **in Harmonie** of any lost property.

in Harmonie will keep lost items found for a month where after it will be donated. Guests are responsible for the arrangements and costs for collection of lost goods.

// Verlore goedere

Gaste moet asseblief **in Harmonie** in kennis stel van enige verlore goedere.

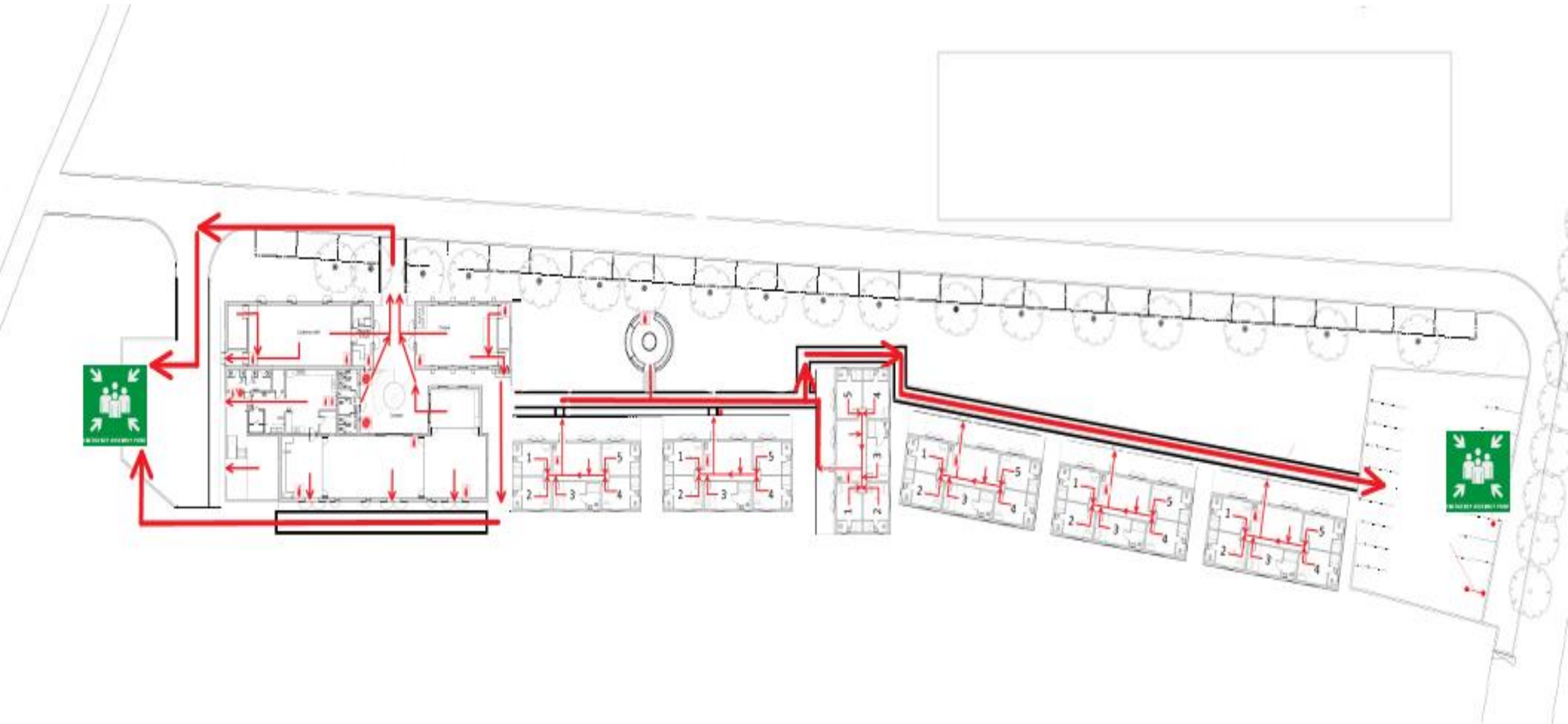
in Harmonie sal verlore goedere vir 'n maand hou waarna dit geskenk sal word.

Gaste is verantwoordelik om reëlings te tref en kostes te dra vir goedere wat afgehaal moet word.

// in Harmonie Venue Evacuation Plan

1. In case of emergency the fire alarm will sound.
2. All persons in cottages should evacuate to the assembly point in Eastern parking lot. (Indicated to the right on the map below.)
3. All persons in conferencing areas should evacuate to the assembly point in Western parking lot. (Indicated to the left on the map below.)
4. Please remain here until further instructions are given.

// in Harmonie Venue Evacuation Plan





Enjoy your visit to **in Harmonie!**

Geniet u bezoek aan **in Harmonie!**



in Harmonie
a place of change